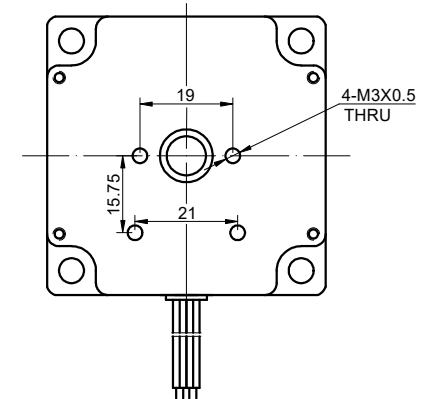
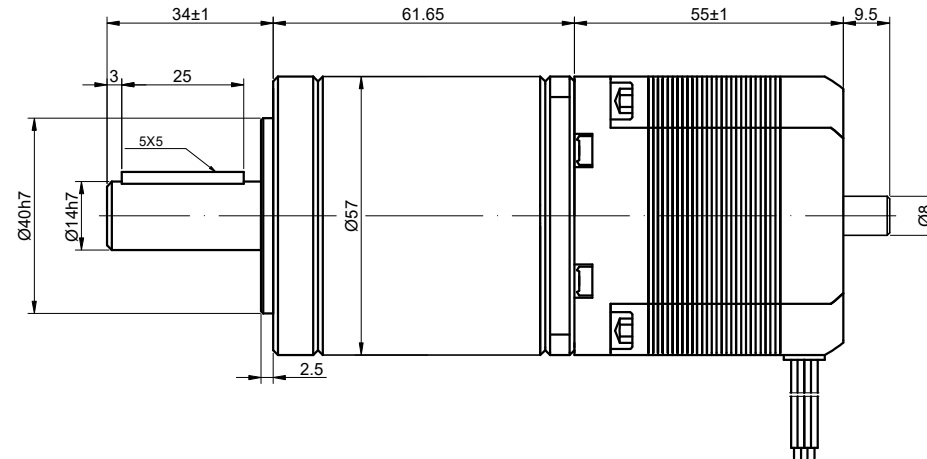
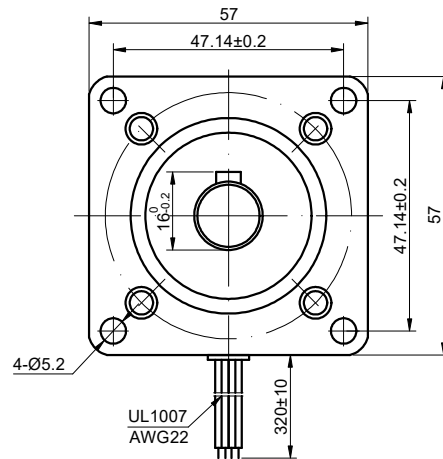


CUSTOMER'S MODEL: NO MODEL
END COVER COLOR: GRAY

REV.	REVISION RECORD	BY	DATE
0	ORIGIN	HW	5.17.2024



SPECIFICATION	CONNECTION	BIPOLAR
AMPS/PHASE		2.80
RESISTANCE/PHASE(Ohms)@25°C		0.90±10%
INDUCTANCE/PHASE(mH)@1KHz		2.80±20%
HOLDING TORQUE w/o GEARBOX(Nm)[lb-in]		1.02[9.03]
STEP ANGLE w/o GEARBOX(°)		1.80±5.00%
GEAR RATIO		50
MAX.PERMISSIBLE TORQUE(Nm)		20.00
MOMENT PERMISSIBLE TORQUE(Nm)		40.00
EFFICIENCY		85%
BACKLASH@NO-LOAD(arcmin)		<=50
LIFE(h)		6000
AMBIENT TEMPERATURE		-10°C~50°C[14°F~122°F]
INSULATION CLASS		B 130°C[266°F]
TEMPERATURE RISE		MAX.80°C

COMMENT:

- 1.DYNAMIC AXIAL LOAD: 100N MAX
- 2.DYNAMIC RADIAL LOAD @ SHAFT LENGTH 20mm: 250N MAX
- 3.TMBF 6000h OR MORE @ 24V/300RPM
- 4.INSULATION RESISTANCE (NORMAL TEMPERATURE AND HUMIDITY): 100 Mohm
- 5.DIELECTRIC STRENGTH 500VAC FOR 1MIN.(BETWEEN THE MOTOR COILS AND THE MOTOR CASE)

FULL STEP 2 PHASE-Ex.,WHEN FACING MOUNTING END (X)				
STEP	A+	B+	A-	B-
1	+	+	-	-
2	-	+	+	-
3	-	-	+	+
4	+	-	-	+

DIMENSIONS ARE IN MILLIMETERS.	
DECIMALS	ANGLES
X ±0.5	±2°
X.X ±0.25	
X.XX ±0.13	
THIRD ANGLE PROJECTION	

MOTOR CONNECTION(EHR-6)			
PIN NO	BIPOLAR	LEADS	WINDING
1	A+	BLK	
2	A -	GRN	
3	B+	RED	
4	B -	BLU	

STEPPERONLINE®

STEPPER MOTOR

23HS22-2804D-HG50-AR3

THIS DOCUMENT SHALL NOT BE REPRODUCED
NOR SHALL THE INFORMATION CONTAINED
HEREIN BE USED BY OR DISCLOSED TO
OTHERS UNLESS EXPRESSLY AUTHORIZED IN
BY WRITING STEPPERONLINE.

SIGNATURE

DATE

DRN

HW

5.17.2024

APVD

SY

5.20.2024

REV.

0

SCALE

1:1

DWG NO.

A1138