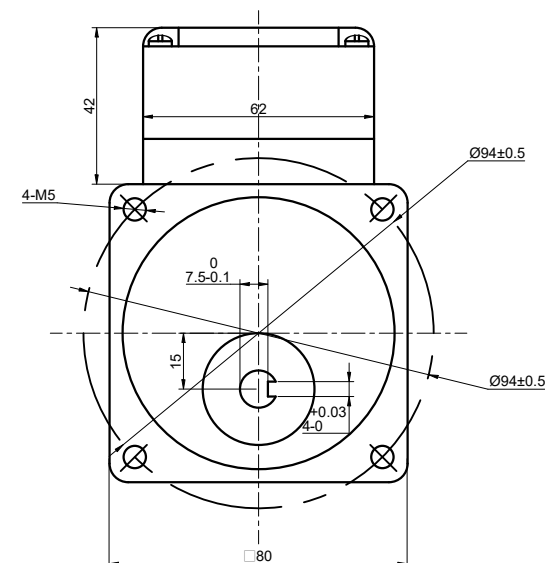
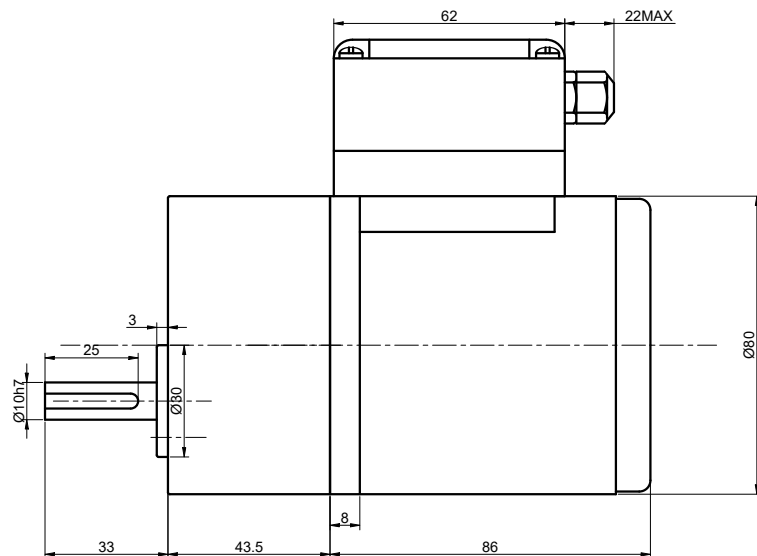


MODEL NO.	4IK25GN-AT/4GN100K	DWG NO.	A3818
-----------	--------------------	---------	-------

CUSTOMER'S MODEL: NO MODEL
END COVER COLOR: BLUE

REV.	REVISION RECORD	BY	DATE
0	ORIGIN	YSX	10.23.2024



SPECIFICATION	VALUE
OUTPUT POWER(W):	25
RATED VOLTAGE(V):	110 (1ph)
FREQUENCY(Hz):	60
CURRENT(A):	0.50
RATED SPEED(RPM):	15.5
RATED TORQUE W/H GEARBOX(mN.m):	152
STARTING TORQUE W/H GEARBOX(mN.m):	154
GEAR RATIO	100
MAX.PERMISSIBLE TORQUE(Nm)	8
AMBIENT TEMPERATURE	-10°C~50°C[14°F~122°F]
INSULATION CLASS	B 130°C[266°F]
TEMPERATURE RISE	MAX.80°C

COMMENT:
1.DYNAMIC AXIAL LOAD: 10N MAX
2.DYNAMIC RADIAL LOAD @ SHAFT LENGTH 20mm: 20N MAX
3.INSULATION RESISTANCE (NORMAL TEMPERATURE AND HUMIDITY): 100 Mohm
4.DIELECTRIC STRENGTH: AC600V CUT OFF CURRENT 5mA FOR 1S

DIMENSIONS ARE IN MILLIMETERS.
TOLERANCES AS BELOW:
DECIMALS ANGLES
X ±0.5 ±2°
X.X ±0.25
X.XX ±0.13

THIRD ANGLE
PROJECTION



STEPPERONLINE®

GEARED AC INDUCTION MOTOR

4IK25GN-AT/4GN100K

THIS DOCUMENT SHALL NOT BE REPRODUCED
NOR SHALL THE INFORMATION CONTAINED
HEREIN BE USED BY OR DISCLOSED TO
OTHERS UNLESS EXPRESSLY AUTHORIZED IN
BY WRITING STEPPERONLINE.

SIGNATURE

DATE

DRN

YSX

10.23.2024

APVD

MYX

10.23.2024

REV.

0

SCALE

1:1

DWG NO.

A3818