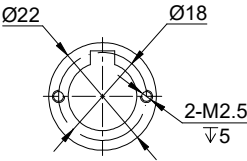

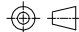


REV.	REVISION RECORD	BY	DATE
0	ORIGIN	HW	6.11.2024



SPECIFICATION		CONNECTION		VALUE																			
GEAR RATIO				50		<div>DIMENSIONS ARE IN MILLIMETERS. TOLERANCES AS BELOW: DECIMALS ANGLES X ±0.5 ±2° X.X ±0.25 X.XX ±0.13</div> <div>THIRD ANGLE PROJECTION</div> 																	
BACKLASH@NO-LOAD(arcsec)				<=20																			
RATED TORQUE(INPUT SPEED 2000RPM)(Nm)[lb-in]				25.00[221.27]																			
MOMENT PERMISSIBLE TORQUE(Nm)[lb-in]				98.00[867.37]																			
PEAK START-STOP TORQUE(Nm)[lb-in]				56.00[495.64]																			
MAXIMUM INPUT SPEED ALLOWED(RPM)				6500		<div>STEPPERONLINE®</div> <div>HARMONIC REDUCER</div>																	
AVERAGE INPUT SPEED ALLOWED(RPM)				3500																			
WEIGHT(kg)				0.72		SIGNATURE		DATE		<div>HHT-20-50-I-D14</div>													
LIFE(h)				10000		DRN		HW								6.11.2024							
AMBIENT TEMPERATURE				0°C~40°C[32°F~104°F]		APVD		LDJ								6.12.2024		REV.		0		SCALE	