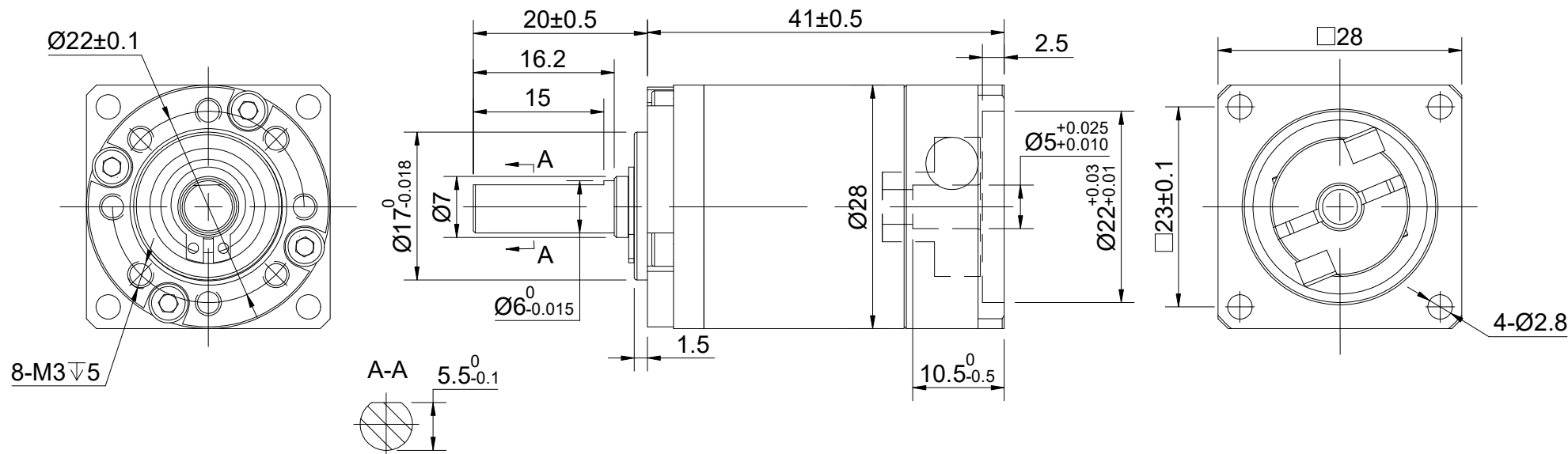


REV.	REVISION RECORD	BY	DATE
0	ORIGIN	HW	3.7.2024



SPECIFICATION		CONNECTION	VALUE		
GEAR RATIO			50		
EFFICIENCY			94%		
BACKLASH@NO-LOAD(arcmin)			$\leq 20$		
MAX.PERMISSIBLE TORQUE(Nm)[lb-in]			3.00[26.55]		
MOMENT PERMISSIBLE TORQUE(Nm)[lb-in]			6.00[53.10]		
SHAFT MAXIMUM AXIAL LOAD(N)			100		
SHAFT MAXIMUM RADIAL LOAD(N)			300		
GEARBOX MATCHING MOTOR'S INPUT SHAFT LENGTH (mm)			6.5-10.5		
RATED INPUT SPEED(RPM)			1000		
MAX. INPUT SPEED(RPM)			2000		
NOISE(dB)			$\leq 55$		
WATERPROOF RATING			IP54		
LIFE(h)			20000		
WORKING TEMPERATURE			$-20^{\circ}\text{C} \sim 150^{\circ}\text{C} [-4^{\circ}\text{F} \sim 302^{\circ}\text{F}]$		

DIMENSIONS ARE IN MILLIMETERS. TOLERANCES AS BELOW: DECIMALS      ANGLES X $\pm 0.5$ $\pm 2^{\circ}$ X.X $\pm 0.25$ X.XX $\pm 0.13$		THIRD ANGLE PROJECTION			
		SIGNATURE		DATE	
		DRN	HW	3.7.2024	
		APVD	LDJ	3.11.2024	

<b>STEPPERONLINE®</b>					
PLANETARY GEARBOX					
EGS11-G50					
REV.	0	SCALE	2:3	DWG NO.	A1806