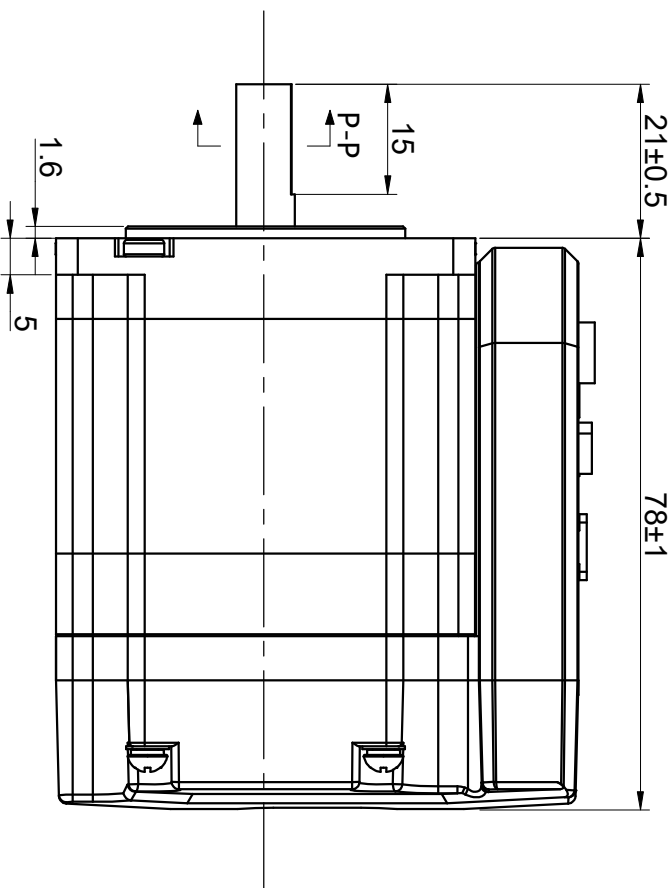
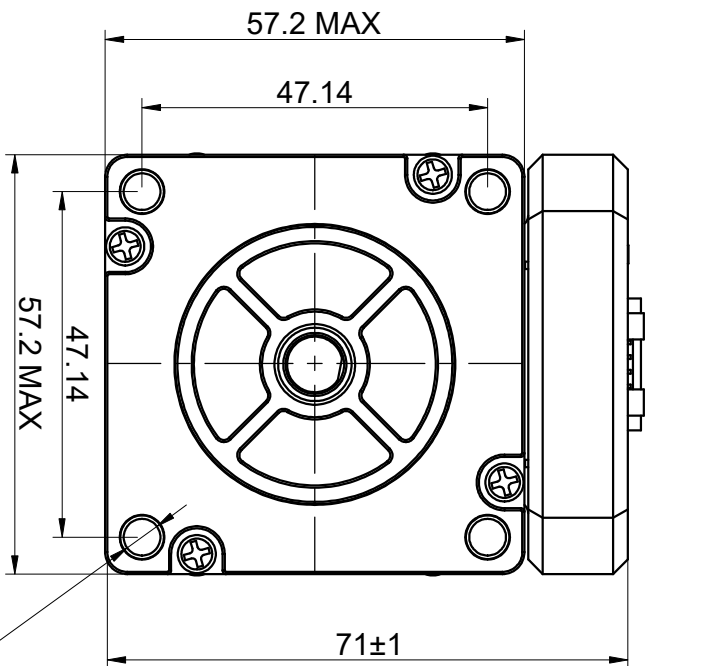


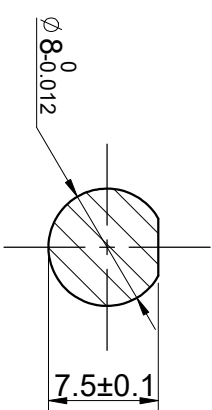
CUSTOMER'S MODEL: NO MODEL
END COVER COLOR: BLACK

REV.	REVISION RECORD	BY	DATE
0	ORIGIN	HW	7.4.2024



4-Ø5.0

P-P
2:1



SPECIFICATION	CONNECTION	BIPOLAR
POWER VOLTAGE(V)		20-50
PEAK CURRENT(A)		0.5-4.5
INPUT LOGICAL VOLTAGE(V)		12-24
OUTPUT CAPABILITY		24V@100mA
HOLDING TORQUE(Nm)(lb-in)		1.30[11.51]
STEP ANGLE(°)		1.80
STEP ACCURACY(NON-ACCUM)		±5.00%
MAX. BAUD RATE		115200
WEIGHT(Kg)(lb)		1.10[2.43]
AMBIENT TEMPERATURE		0°C~50°C[32°F~122°F]
INSULATION CLASS		B 130°C[266°F]
TEMPERATURE RISE		MAX.80°C

FULL STEP 2 PHASE-EX. WHEN FACING MOUNTING END (X)						DIMENSIONS ARE IN MILLIMETERS.	
STEP	A+	B+	A-	B-		TOLERANCES AS BELOW:	
1	+	+	-	-		DECIMALS	±0.5
2	-	+	+	-		ANGLES	±2°
3	-	-	+	+			
4	+	-	-	+			
CW						THIRD ANGLE PROJECTION	

SIGNATURE	DATE
DRN	HW
APVD	ZPJ

STEPPERONLINE®

INTEGRATED STEPPER MOTOR

IDM57-RS13