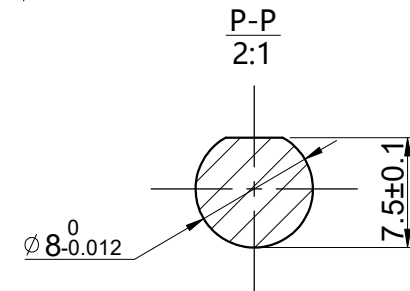
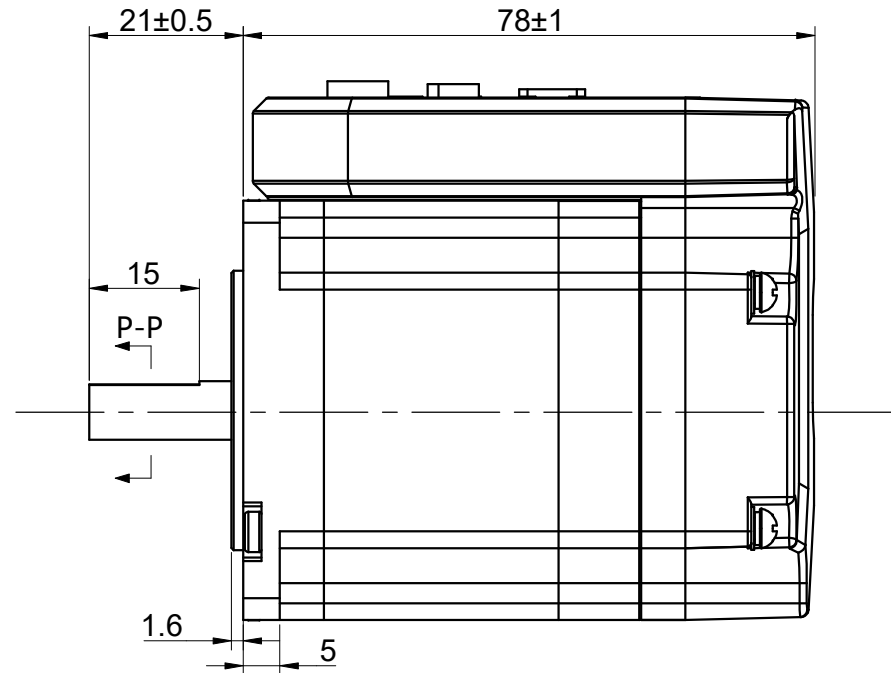
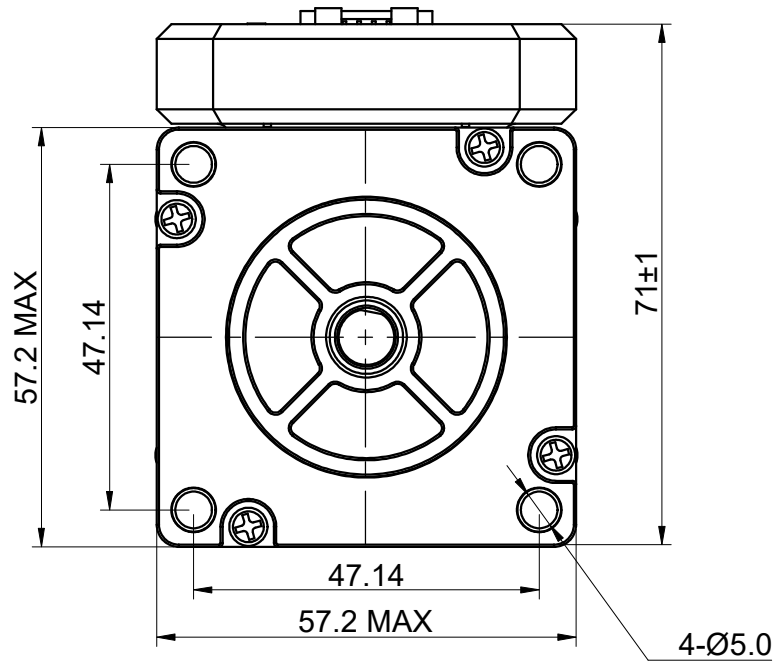


MODEL NO.	!CL57-RS13	DWG NO.	A3465
-----------	------------	---------	-------

CUSTOMER'S MODEL: NO MODEL  
END COVER COLOR: BLACK

REV.	REVISION RECORD	BY	DATE
0	ORIGIN	HW	7.4.2024



CONNECTION	BIPOLAR
SPECIFICATION	
POWER VOLTAGE(V)	20-50
PEAK CURRENT(A)	0.5-4.5
INPUT LOGICAL VOLTAGE(V)	12-24
OUTPUT CAPABILITY	24V@100mA
HOLDING TORQUE(Nm)[lb-in]	1.30[11.51]
STEP ANGLE(°)	1.80
STEP ACCURACY(NON-ACCUM)	±5.00%
MAX. BAUD RATE	115200
WEIGHT(Kg)[lb]	1.10[2.43]
AMBIENT TEMPERATURE	0°C~50°C[32°F~122°F]
INSULATION CLASS	B 130°C[266°F]
TEMPERATURE RISE	MAX.80°C

FULL STEP 2 PHASE-Ex.,WHEN FACING MOUNTING END (X)						DIMENSIONS ARE IN MILLIMETERS.	
STEP	A+	B+	A-	B-		DECIMALS	ANGLES
1	+	+	-	-		X ±0.5	±2°
2	-	+	+	-		X.X ±0.25	
3	-	-	+	+		X.XX ±0.13	
4	+	-	-	+			
CW						THIRD ANGLE PROJECTION	

THIS DOCUMENT SHALL NOT BE REPRODUCED  
NOR SHALL THE INFORMATION CONTAINED  
HEREIN BE USED BY OR DISCLOSED TO  
OTHERS UNLESS EXPRESSLY AUTHORIZED IN  
BY WRITING STEPPERONLINE.

SIGNATURE		DATE
DRN	HW	7.4.2024
APVD	ZPJ	7.5.2024

STEPPERONLINE®									
INTEGRATED STEPPER MOTOR									
iCL57-RS13									
REV.	0	SCALE	1:1	DWG NO.	A3465				