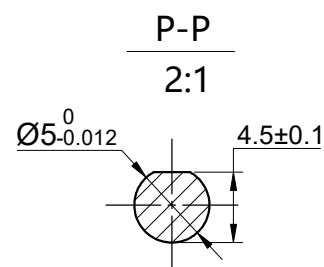
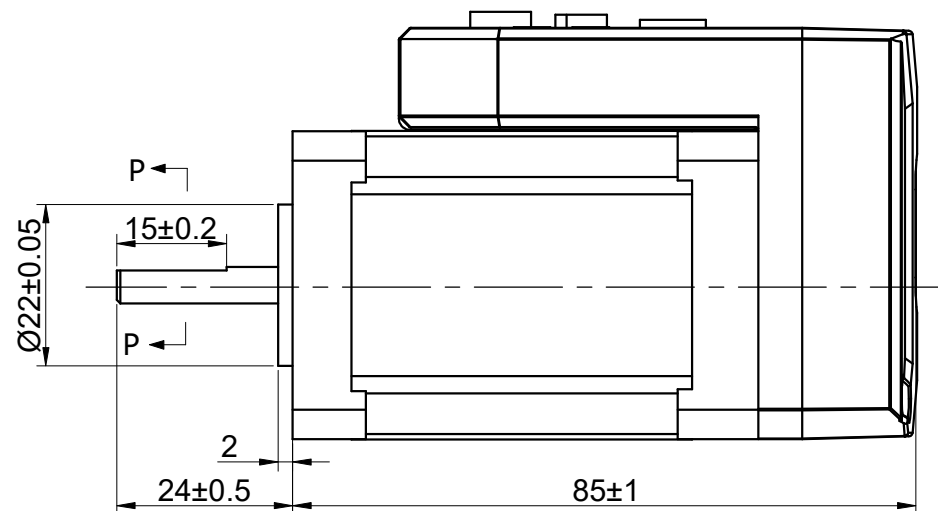
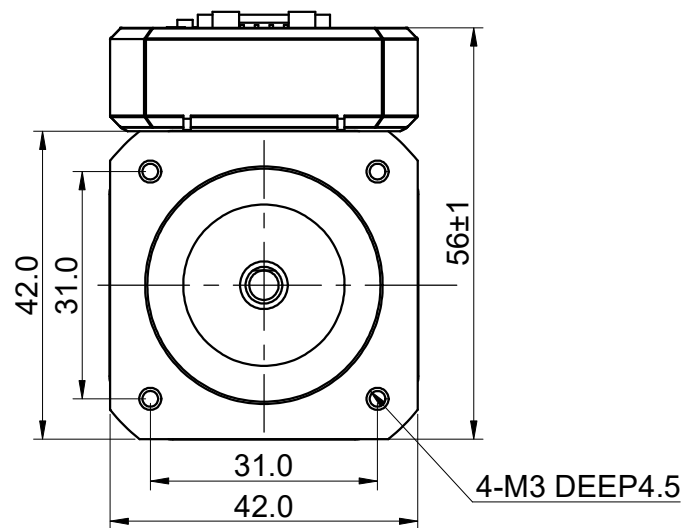


MODEL NO.	iDM42-RS08	DWG NO.	A3454
-----------	------------	---------	-------

CUSTOMER'S MODEL: NO MODEL
END COVER COLOR: BLACK

REV.	REVISION RECORD	BY	DATE
0	ORIGIN	HW	7.2.2024



CONNECTION	BIPOLAR
SPECIFICATION	
POWER VOLTAGE(V)	20-36
PEAK CURRENT(A)	0.3-3.0
INPUT LOGICAL VOLTAGE(V)	12-24
OUTPUT CAPABILITY	24V@100mA
HOLDING TORQUE(Nm)[lb-in]	0.80[7.08]
STEP ANGLE(°)	1.80
STEP ACCURACY(NON-ACCUM)	±5.00%
MAX. BAUD RATE	115200
WEIGHT(Kg)[lb]	1.10[2.43]
AMBIENT TEMPERATURE	0°C~50°C[32°F~122°F]
INSULATION CLASS	B 130°C[266°F]
TEMPERATURE RISE	MAX.80°C

FULL STEP 2 PHASE-Ex.,WHEN FACING MOUNTING END (X)						DIMENSIONS ARE IN MILLIMETERS.	
STEP	A+	B+	A-	B-		TOLERANCES AS BELOW:	
1	+	+	-	-		DECIMALS	ANGLES
2	-	+	+	-		X ±0.5	±2°
3	-	-	+	+		X.X ±0.25	
4	+	-	-	+		X.XX ±0.13	
						THIRD ANGLE PROJECTION	
						SIGNATURE	DATE
						DRN	HW
						APVD	ZPJ

STEPPERONLINE®									
INTEGRATED STEPPER MOTOR									
iDM42-RS08									
REV.	0	SCALE	1:1	DWG NO.	A3454				