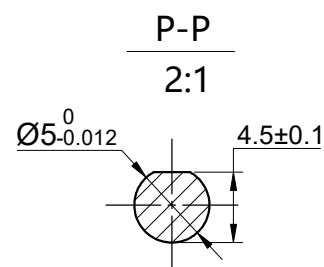
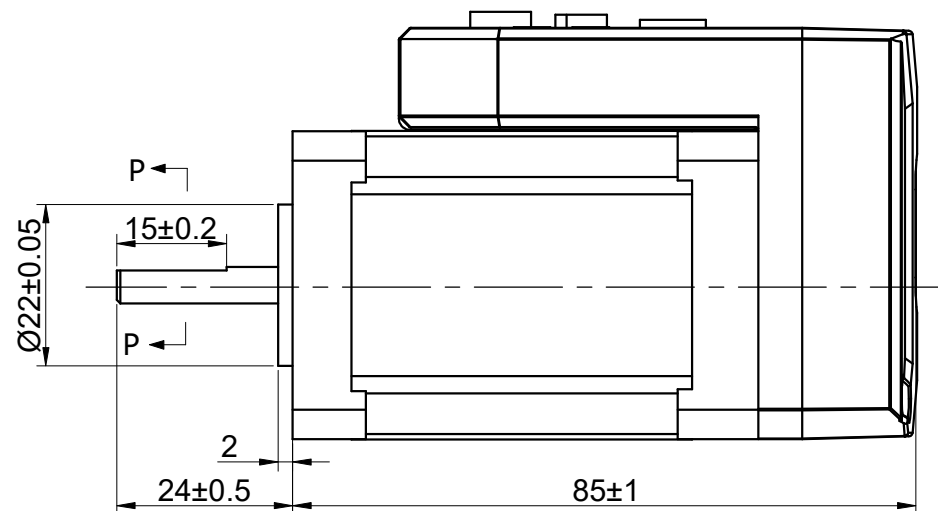
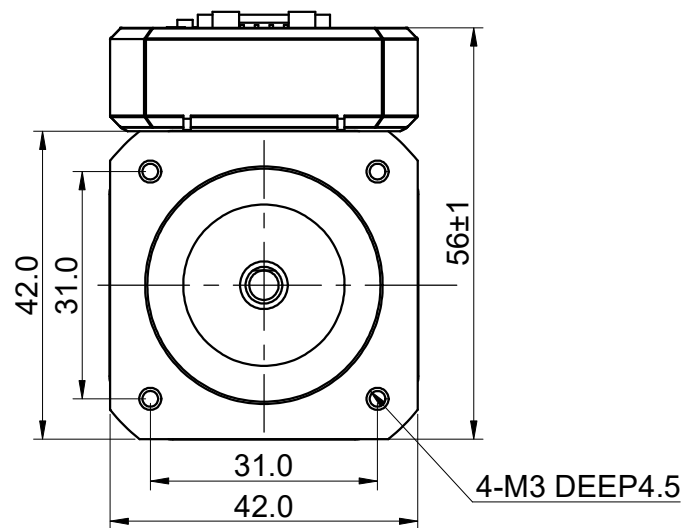


MODEL NO.	iDM42-RS08	DWG NO.	A3454
-----------	------------	---------	-------

CUSTOMER'S MODEL: NO MODEL
END COVER COLOR: BLACK

REV.	REVISION RECORD	BY	DATE
0	ORIGIN	HW	7.2.2024



CONNECTION	BIPOLAR
SPECIFICATION	
POWER VOLTAGE(V)	20-36
PEAK CURRENT(A)	0.3-3.0
INPUT LOGICAL VOLTAGE(V)	12-24
OUTPUT CAPABILITY	24V@100mA
HOLDING TORQUE(Nm)[lb-in]	0.80[7.08]
STEP ANGLE(°)	1.80
STEP ACCURACY(NON-ACCUM)	±5.00%
MAX. BAUD RATE	115200
WEIGHT(Kg)[lb]	1.10[2.43]
AMBIENT TEMPERATURE	0°C~50°C[32°F~122°F]
INSULATION CLASS	B 130°C[266°F]
TEMPERATURE RISE	MAX.80°C

FULL STEP 2 PHASE-Ex.,WHEN FACING MOUNTING END (X)					DIMENSIONS ARE IN MILLIMETERS.	
STEP	A+	B+	A-	B-	TOLERANCES AS BELOW:	
1	+	+	-	-	DECIMALS	ANGLES
2	-	+	+	-	X ±0.5	±2°
3	-	-	+	+	X.X ±0.25	
4	+	-	-	+	X.XX ±0.13	
<div> <div>CCW</div> <div>CW</div> </div>					THIRD ANGLE PROJECTION	
THIS DOCUMENT SHALL NOT BE REPRODUCED NOR SHALL THE INFORMATION CONTAINED HEREIN BE USED BY OR DISCLOSED TO OTHERS UNLESS EXPRESSLY AUTHORIZED IN BY WRITING STEPPERONLINE.					SIGNATURE	DATE
					DRN	HW
					APVD	ZPJ
					7.2.2024	7.5.2024

INTEGRATED STEPPER MOTOR									
iDM42-RS08									
REV.	0	SCALE	1:1	DWG NO.	A3454				