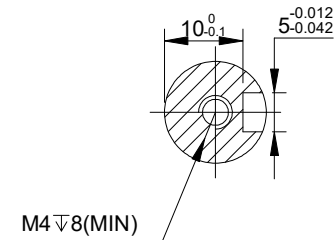
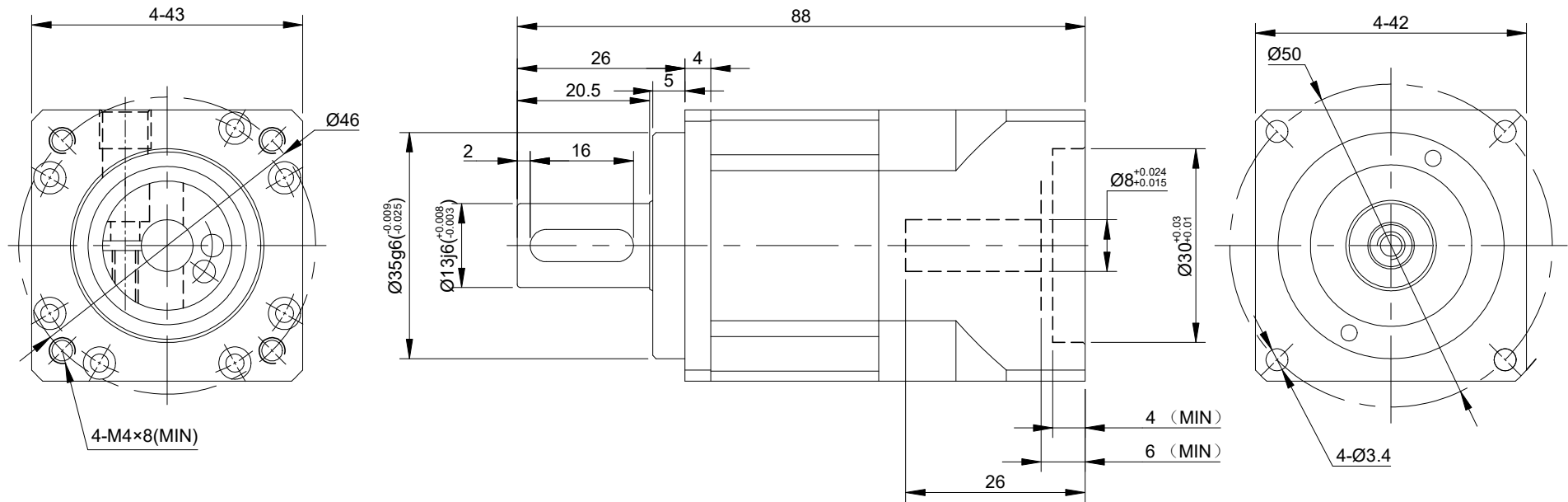


REV.	REVISION RECORD	BY	DATE
0	ORIGIN	LDJ	7.2.2024



SPECIFICATION	CONNECTION	VALUE
GEAR RATIO		5
EFFICIENCY		95%
BACKLASH@NO-LOAD(arcmin)		5
MAX.PERMISSIBLE TORQUE(Nm)[lb-in]		9.00[79.65]
MOMENT PERMISSIBLE TORQUE(Nm)[lb-in]		35.00[309.78]
SHAFT MAXIMUM AXIAL LOAD(N)		640
SHAFT MAXIMUM RADIAL LOAD(N)		710
GEARBOX MATCHING MOTOR'S INPUT SHAFT LENGTH (mm)		26MAX
RATED INPUT SPEED(RPM)		4000
MAX. INPUT SPEED(RPM)		8000
WEIGHT(KG)		0.60
WATERPROOF RATING		IP65
LIFE(h)		20000
WORKING TEMPERATURE		-10°C~+90°C[14°F~194°F]

DIMENSIONS ARE IN MILLIMETERS. TOLERANCES AS BELOW: DECIMALS ANGLES X ±0.5 ±2° X.X ±0.25 X.XX ±0.13	
THIRD ANGLE PROJECTION	
SIGNATURE	DATE
DRN LDJ	7.2.2024
APVD HW	7.8.2024

STEPPERONLINE®									
GEARBOX									
AB42-G5-D8									
REV.	1	SCALE	1:1	DWG NO.	A3432				