

直角减速电机
RIGHT ANGLE GEAR MOTOR

90W
90mm

STEPPERONLINE®



电机型号/性能 List of motor characteristics

电机型号 Motor Model		输出功率 Output Power	电压 Voltage	频率 Frequency	电流 Current	额定转速 Rated Speed	额定转矩 Rated Torque	启动转矩 Starting Torque	运行电容 Capacitor
齿轮轴型 Pinion Shaft	圆轴型 Round Shaft	W	V	Hz	A	r/min	mN.m	mN.m	μF/VAC
5IK90GU-CF	5IK90A-CF	90	1ph220	50	0.64	1350	643	459	5.0/450
				60	0.71	1550	530	450	
5IK90GU-AF	5IK90A-AF	90	1ph110	50	1.26	1350	646	475	20.0/250
				60	1.40	1550	525	489	
5IK90GU-SF	5IK90A-SF	90	3ph220	50	0.53	1350	625	2800	/
				60	0.61	1550	527	2150	
5IK90GU-S3F	5IK90A-S3F	90	3ph380	50	0.37	1350	625	2660	/
				60	0.35	1550	519	2030	

●各种安全规格以电机铭牌上的型号名取得认证。●注：“A”型号中电压为110V时，配置电容器容量以实际铭牌为准。●如需调速电机参照p56，电磁制动减速电机参照p77。
● When the motor is approved under various safety standards, the model name on the nameplate is the approved model name. ● Note “sAlt” means the voltage 110v. the assembly capacitor value it is according to the label. ● For speed control gear motor, please refer to page 71, for brake gear motor, please refer to page 92.

减速箱减速比/性能对照表 Gear reduction ratio/performance comparison

减速比 Gear Ratio	3	5	6	7.5	9	10	12.5	15	18	20	25	30	36	40	50	60	75	90	100	120	150	180
转速 Speed r/min	450	270	225	180	150	135	108	90	75	67.5	54	45	37.5	33.75	27	22.5	18	15	13.5	11.25	9	7.5
转矩 Torque N.m	1.3	2.1	2.5	3.5	4.2	4.6	5.8	7.0	8.4	9.3	12	14	15	17	21	25	32	38	40	40	40	40

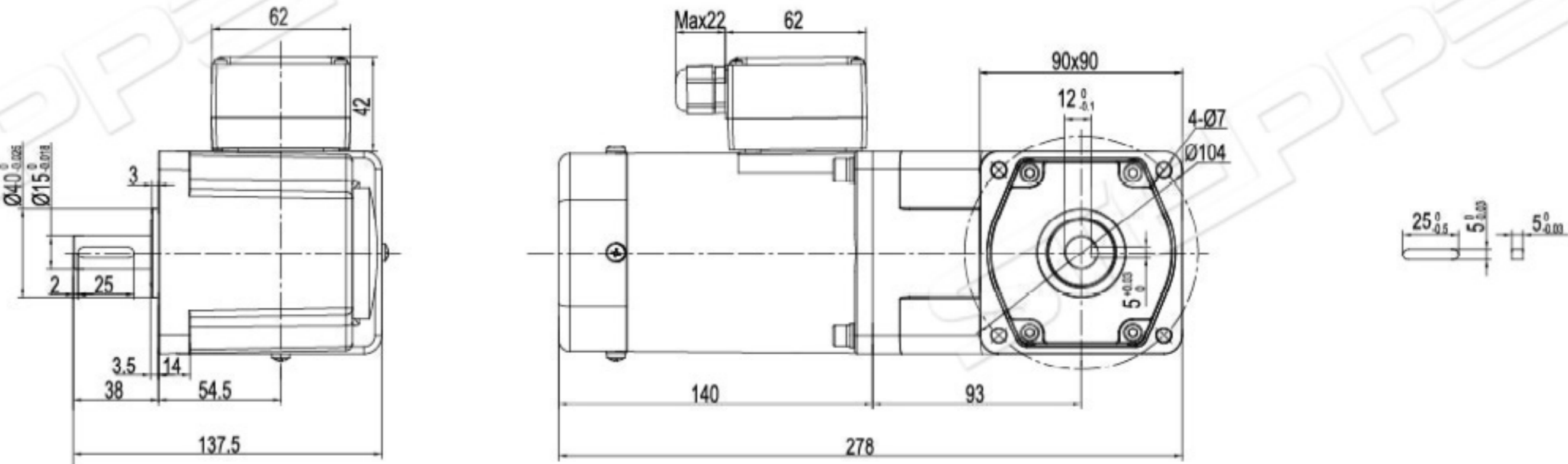
●表中转速是以电机的平均转速（50Hz：1350r/min、60Hz：1550r/min）为基数除以减速比而算出的数值。实际转速将随负载大小而变化，变化范围2~20%。
●表中色框表示输出轴的旋转方向与电机旋转方向相反。
●表中转矩是以电机额定转矩×减速比×传动效率计算而得。
●减速箱的最大容许转矩为20N·M。
● In the table, the speed is calculated from the base of the motor's average speed (50Hz: 1350r/min, 60Hz: 1550r/min) divided by the deceleration ratio. The actual speed will vary with the load, ranging from 2 % to 20%.
● The box in the table indicates that the rotation direction of the output axis is opposite to that of the motor.
● Table transfer torque is calculated from motor rated torque * deceleration ratio * transmission efficiency.
● The maximum allowable torque of the decelerator is 20N·M.

外形尺寸（单位mm）Dimension (unit mm)

感应、阻尼尺寸图 INDUCTION、REVERSIBLE TYPE DRAWING

●弧锥齿实心轴 5IK90GU-CFT/5GU □ RT

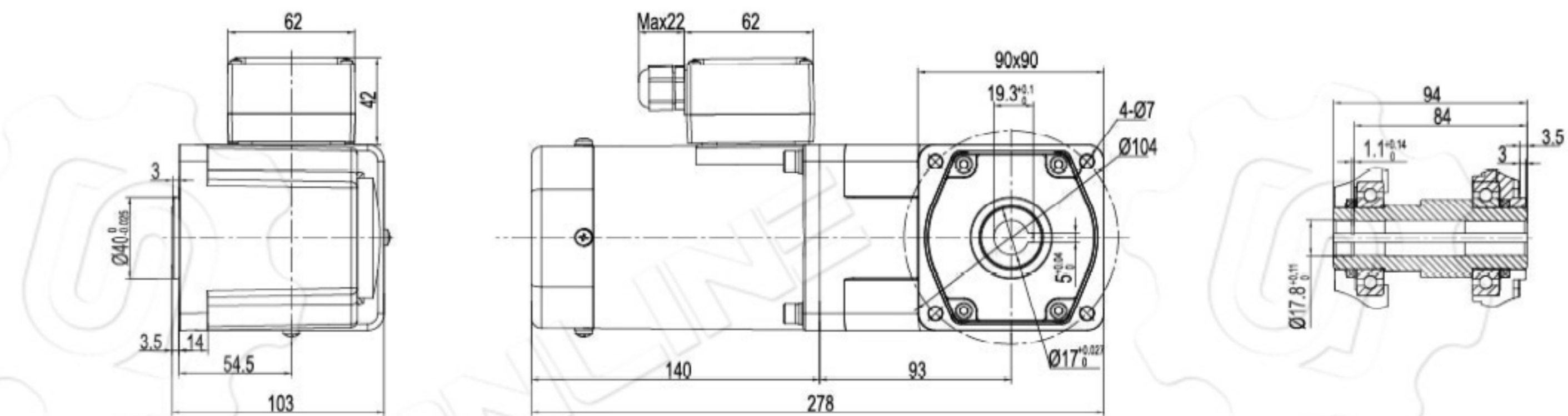
重量 Weight: 6.6kg



●键（减速器附件）

●弧锥齿空心轴 5IK90GU-CFT/5GU □ RC

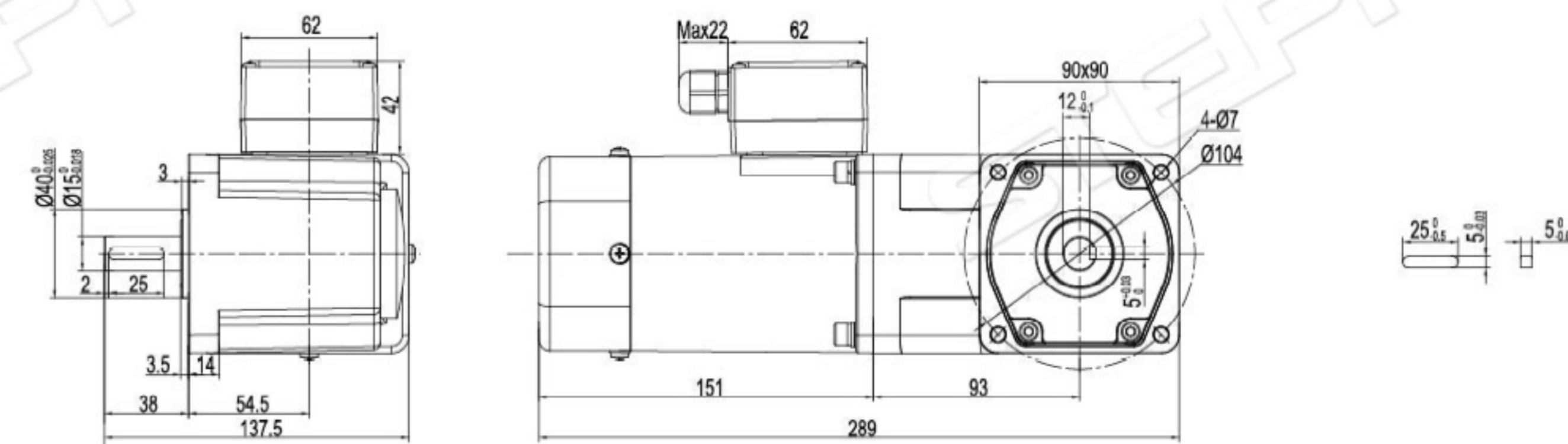
重量 Weight: 6.4kg



调速尺寸图 SPEED CONTROL TYPE DRAWING

●弧锥齿实心轴 5IK90RGU-CFT/5GU □ RT

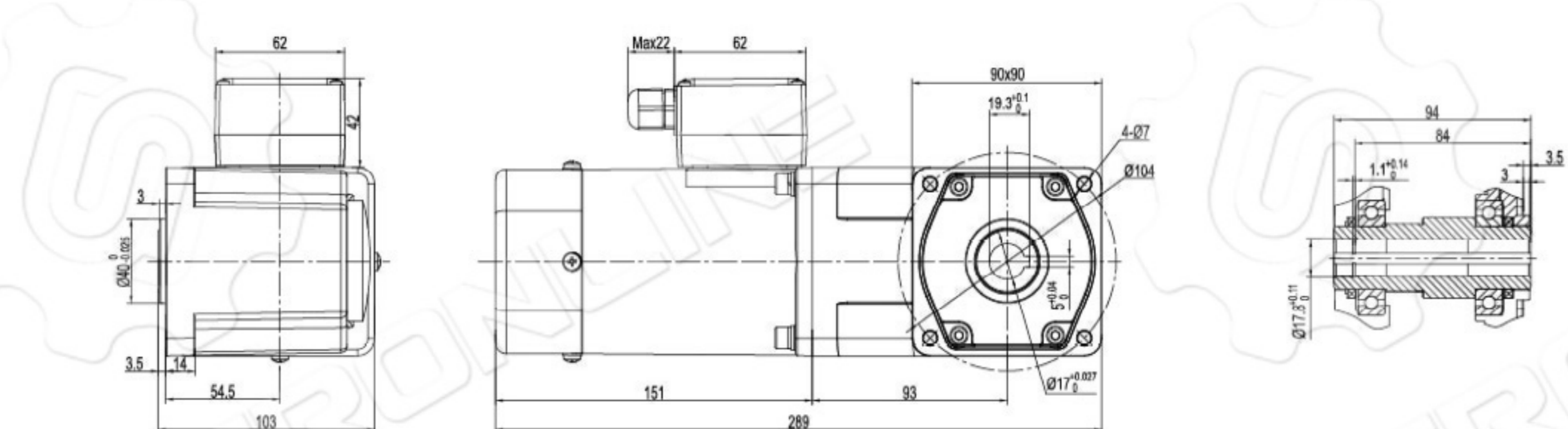
重量 Weight: 6.7kg



●键（减速器附件）

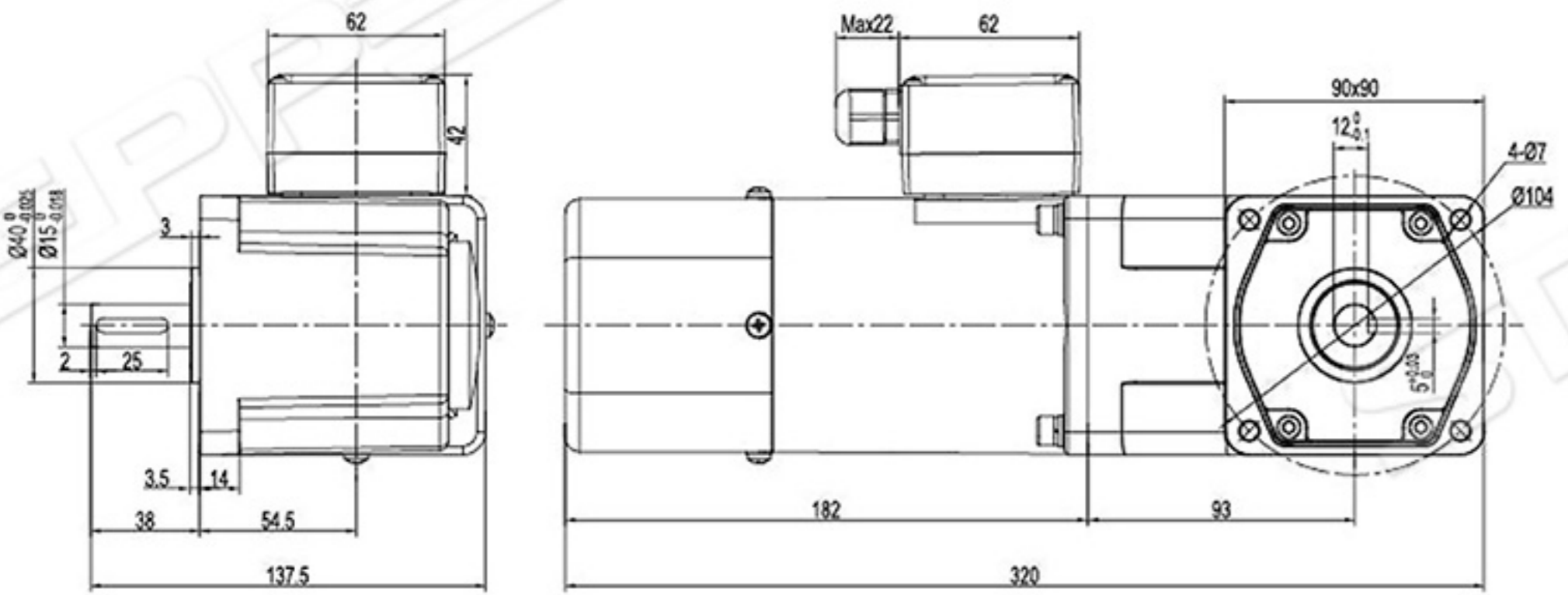
●弧锥齿空心轴 5IK90RGU-CFT/5GU □ RC

重量 Weight: 6.5kg

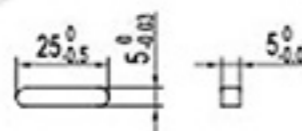


电磁制动尺寸图 BRAKE TYPE DRAWING

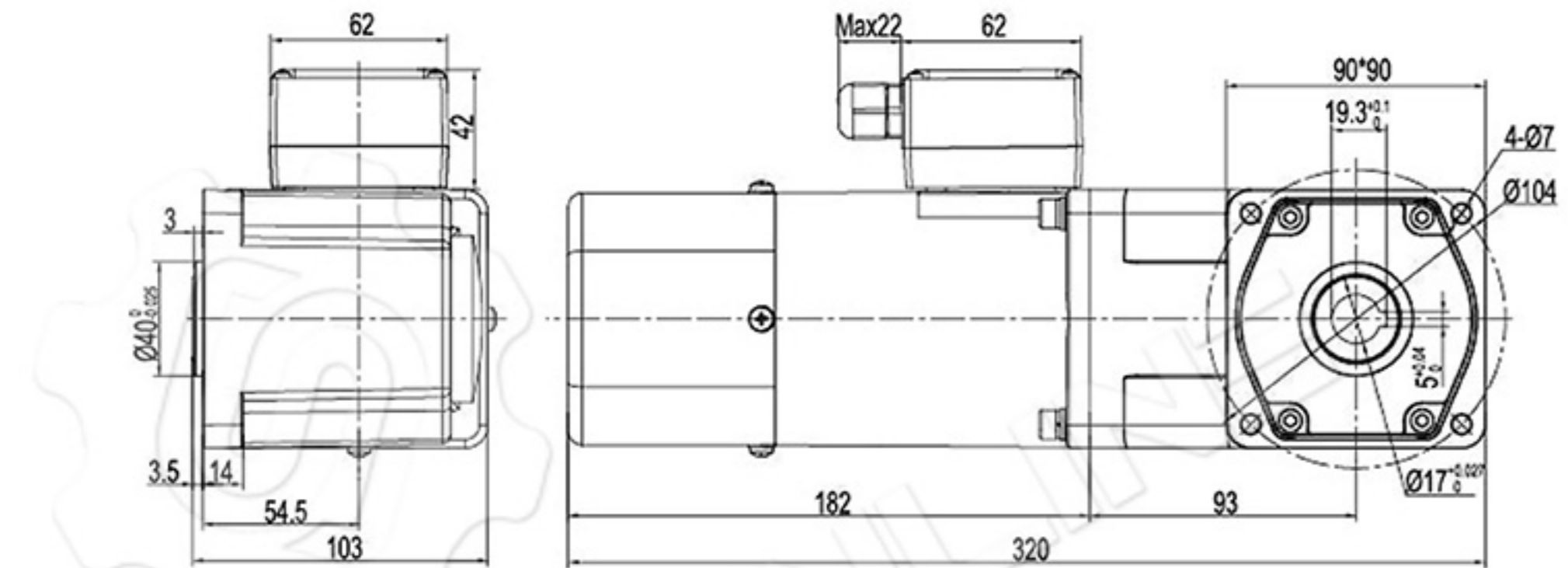
●弧锥齿实心轴 5RK90GU-CMFT/5GU □ RT
重量 Weight: 7.4kg



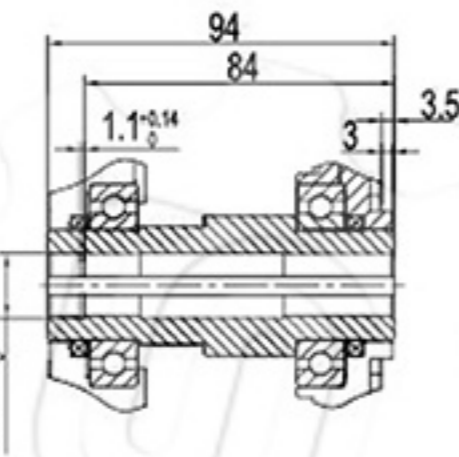
●键 (减速器附件)



●弧锥齿空心轴 5RK90GU-CMFT/5GU □ RC
重量 Weight: 7.2kg



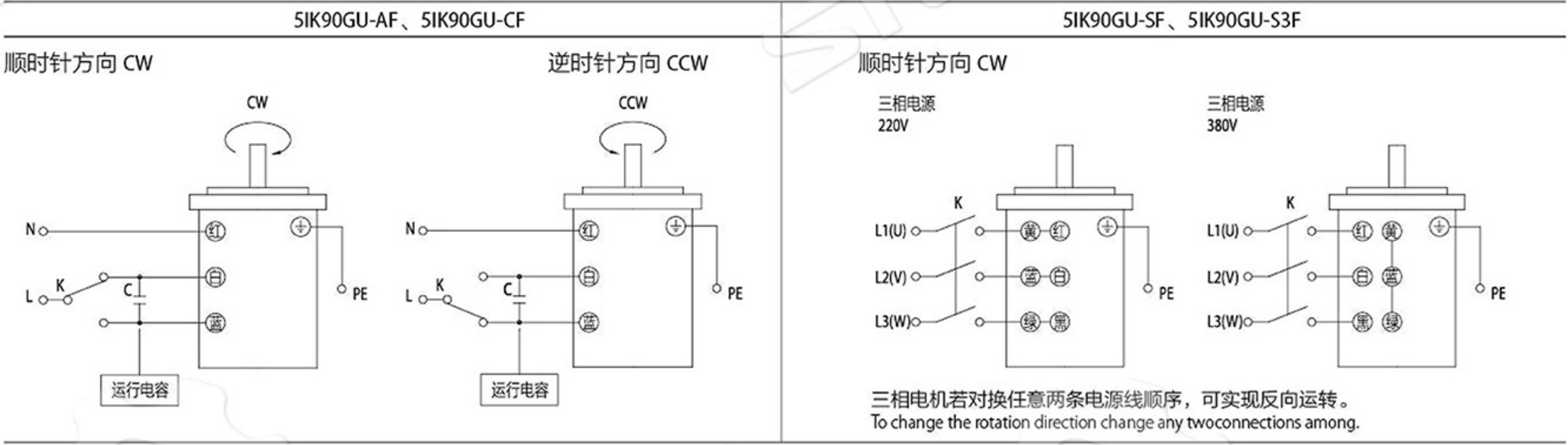
●键 (减速器附件)



注: 接线盒可选, 详见 P148.

●接线图Wiring Diagram

- 运转方向指从电机轴看来的方向。CW 表示顺时针方向, CCW 表示逆时针方向。
- 表中所记型号为齿轮轴型, 圆轴型亦同。
- The direction of motor rotation is as viewed from the shaft end of motoc CW represents the clockwise direction, while CCW represents the counterdockwise direction.
- Name indicated in the list is pinion shaft we, also valid for the equivalent round shaft type.



●请注意Note

单相电机运转方向的转换应在电机停止后进行。
若在电机运转时转换运转方向, 可能发生无法转换运转方向或须费时较久的情况。
Change the direction of single-phase motor rotation only after bring the motor to a stop.
If an attempt is made to change the direction of rotation while the motor is rotating, motor may ignore reversing command or change its direction of rotation after some delay.