

直角减速电机  
RIGHT ANGLE GEAR MOTOR

120W  
90mm



电机型号/性能 List of motor characteristics

电机型号 Motor Model		输出功率 Output Power	电压 Voltage	频率 Frequenc	电流 Current	额定转速 Rated Speed	额定转矩 Rated Torque	启动转矩 Starting Torque	运行电容 Capacitor
齿轮轴型 Pinion Shaft	圆轴型 Round Shaft	W	V	Hz	A	r/min	mN.m	mN.m	μF/VAC
5IK120GU-CF	5IK120A-CF	120	1ph220	50	0.87	1350	874	663	6.0/450
				60	0.90	1550	709	655	
5IK120GU-AF	5IK120A-AF	120	1ph110	50	1.79	1350	919	500	25.0/250
				60	1.65	1550	740	524	
5IK120GU-SF	5IK120A-SF	120	3ph220	50	0.60	1350	879	2800	/
				60	0.70	1550	735	2150	
5IK120GU-S3F	5IK120A-S3F	120	3ph380	50	0.42	1350	879	2660	/
				60	0.40	1550	731	2030	

●各种安全规格以电机铭牌上的型号名取得认证。●注：“A”型号中电压为110V时，配置电容器容量以实际铭牌为准。●如需调速电机参照p58，电磁制动减速电机参照p80。  
● When the motor is approved under various safety standards, the model name on the nameplate is the approved model name. ● Note \*sAit means the voltage 110v. the assembly capacitor vaule it is according the labe. ● For speed control gear motor, please refer to page73, for brake gear motor, please refer to page95.

减速箱减速比/性能对照表 Gear reduction ratio/performance comparison

减速比 Gear Ratio	3	5	6	7.5	9	10	12.5	15	18	20	25	30	36	40	50	60	75	90	100	120	150	180
转速 Speed r/min	450	270	225	180	150	135	108	90	75	67.5	54	45	37.5	33.75	27	22.5	18	15	13.5	11.25	9	7.5
转矩 Torque N.m	1.7	2.8	3.4	4.6	5.6	6.2	7.7	9.3	11	12	15	19	20	22	28	34	40	40	40	40	40	40

●表中转速是以电机的平均转速（50Hz：1350r/min、60Hz：1550r/min）为基数除以减速比而算出的数值。实际转速将随负载大小而变化，变化范围2~20%。  
●表中 色框表示输出轴的旋转方向与电机旋转方向相反。  
●表中转矩是以电机额定转矩×减速比×传动效率计算而得。  
●减速箱的最大容许转矩为20N·M。  
● In the table, the speed is calculated from the base of the motor's average speed (50Hz: 1350r/min, 60Hz: 1550r/min) divided by the deceleration ratio.  
The actual speed will vary with the load, ranging from 2 % to 20%.  
● The box in the table indicates that the rotation direction of the output axis is opposite to that of the motor.  
● Table transfer torque is calculated from motor rated torque \* deceleration ratio \* transmission efficiency.  
● The maximum allowable torque of the decelerator is 20N·M.

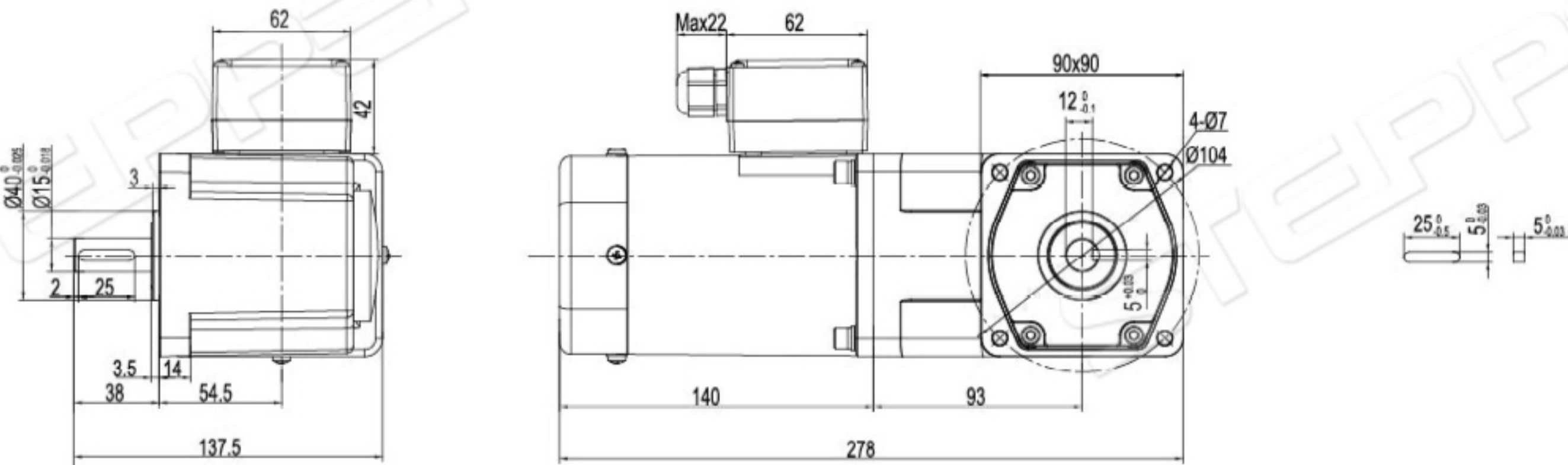
STEPPERONLINE®

外形尺寸（单位mm）Dimension (unit mm)

感应、阻尼尺寸图 INDUCTION、REVERSIBLE TYPE DRAWING

●弧锥齿实心轴 5IK120GU-CFT/5GU □ RT

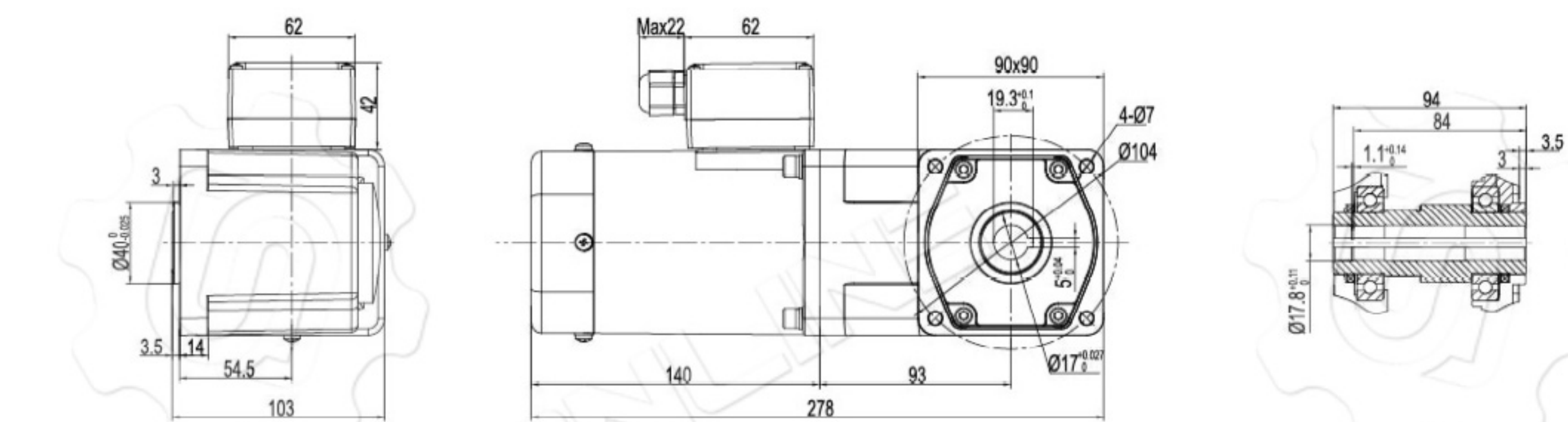
重量 Weight: 6.6kg



●键（减速器附件）

●弧锥齿空心轴 5IK120GU-CFT/5GU □ RC

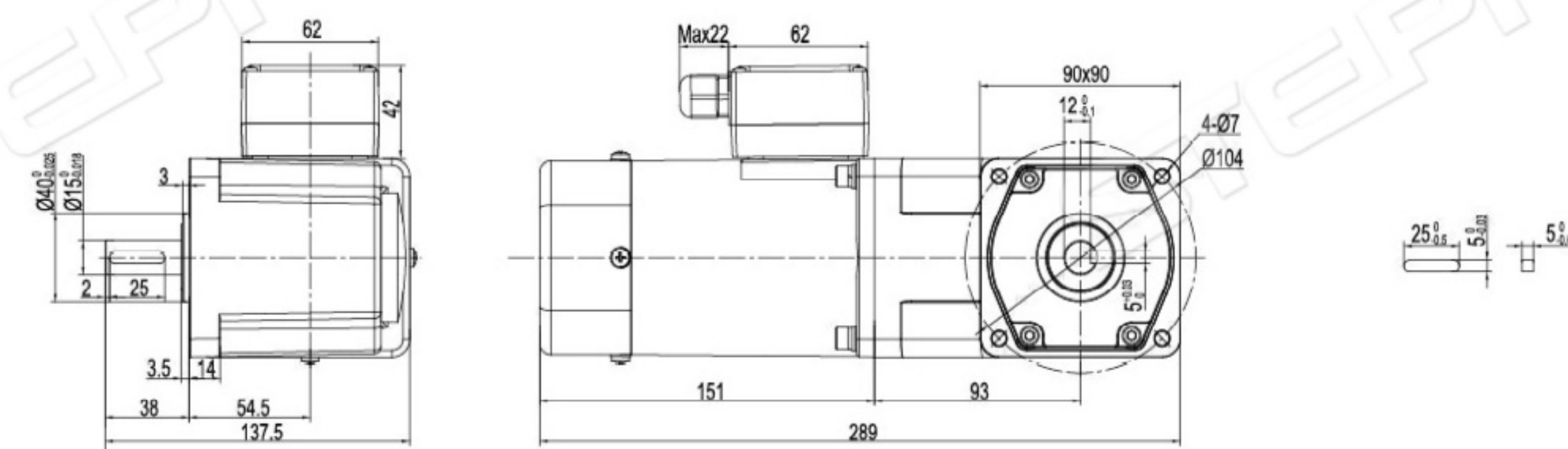
重量 Weight: 6.4kg



调速尺寸图 SPEED CONTROL TYPE DRAWING

●弧锥齿实心轴 5IK120RGU-CFT/5GU □ RT

重量 Weight: 6.7kg



●键（减速器附件）

●弧锥齿空心轴 5IK120RGU-CFT/5GU □ RC

重量 Weight: 6.5kg

