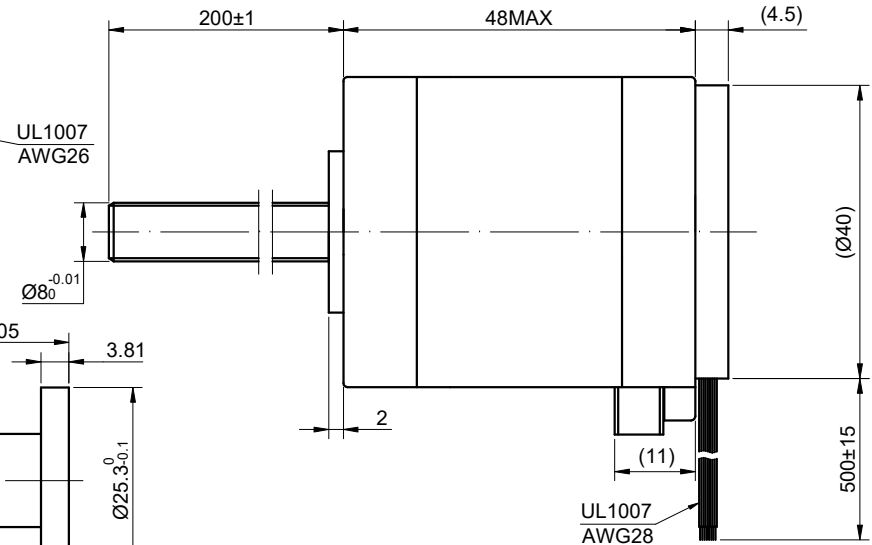
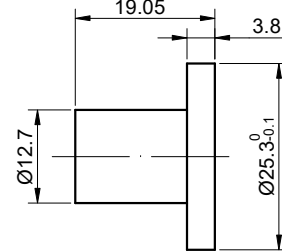
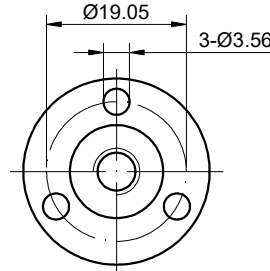
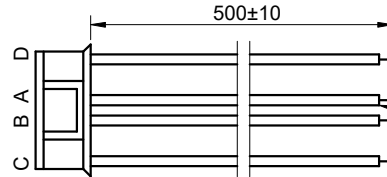
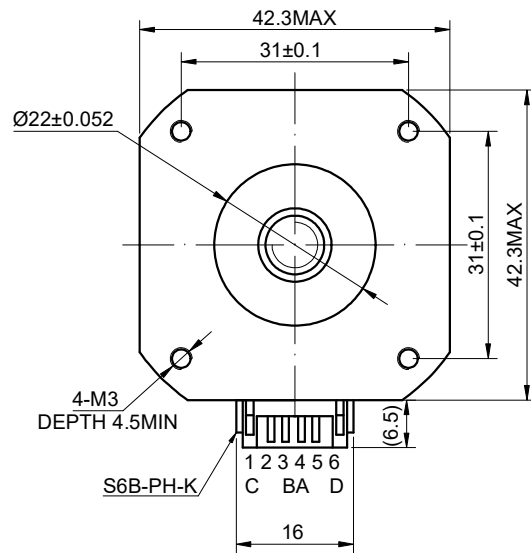


9636	DWG NO.	17E19S1684MB4-200RS-AR4	MODEL NO.
------	---------	-------------------------	-----------

CUSTOMER'S MODEL: NO MODEL  
END COVER COLOR: BLACK

REV.	REVISION RECORD	BY	DATE
0	ORIGIN	YSX	12.29.2023
0	INCREASE SCREW TOLERANCE	YSX	8.27.2024



ENCODER RESOLUTION:1000PPR		
PIN	DESCRIPTION	COLOR
1	+5V	RED
2	GND	BLK
3	EA+	BRN
4	EA-	ORG
5	EB+	BLU
6	EB-	GRN
7	EZ+	YEL
8	EZ-	WHT

MOTOR CONNECTION			
PIN NO	BIPOLAR	LEADS	WINDING
1	A+	BLK	
2	A -	GRN	
3	B+	RED	
4	B -	BLU	

CONNECTION	BIPOLAR
AMPS/PHASE	1.68
RESISTANCE/PHASE(Ohms)@25°C	1.65±10%
INDUCTANCE/PHASE(mH)@1KHz	2.80±20%
HOLDING TORQUE(Nm)[lb-in]	0.44[3.89]
STEP ANGLE(°)	1.80
STEP ACCURACY(NON-ACCUM)	±5.00%
LEAD(mm)	8
LINEAR TRAVEL/STEP(mm)	0.04
AMBIENT TEMPERATURE	-10°C~50°C[14°F~122°F]
INSULATION CLASS	B 130°C[266°F]
TEMPERATURE RISE	MAX.80°C
AMBIENT HUMIDITY	MAX.85%

COMMENT:  
1.TMBF 6000h OR MORE @ 24V/300RPM  
2.INSULATION RESISTANCE  
(NORMAL TEMPERATURE AND HUMIDITY): 100 Mohm  
3.DIELECTRIC STRENGTH 500VAC  
FOR 1MIN.(BETWEEN THE MOTOR COILS AND THE MOTOR CASE )

FULL STEP 2 PHASE-Ex.,WHEN FACING MOUNTING END (X)				
STEP	A+	B+	A-	B-
1	+	+	-	-
2	-	+	+	-
3	-	-	+	+
4	+	-	-	+

DIMENSIONS ARE IN MILLIMETERS.	
TOLERANCES AS BELOW:	ANGLES
X ±0.5	±2°
X.X ±0.25	
X.XX ±0.13	
THIRD ANGLE PROJECTION	

**STEPPERONLINE®**

**LINEAR ACTUATOR**

**17E19S1684MB4-200RS-AR4**

THIS DOCUMENT SHALL NOT BE REPRODUCED  
NOR SHALL THE INFORMATION CONTAINED  
HEREIN BE USED BY OR DISCLOSED TO  
OTHERS UNLESS EXPRESSLY AUTHORIZED IN  
BY WRITING STEPPERONLINE.

SIGNATURE		DATE
DRN	YSX	8.27.2024
APVD	LDJ	8.27.2024

REV.	0	SCALE	1:1	DWG NO.	A3636
------	---	-------	-----	---------	-------