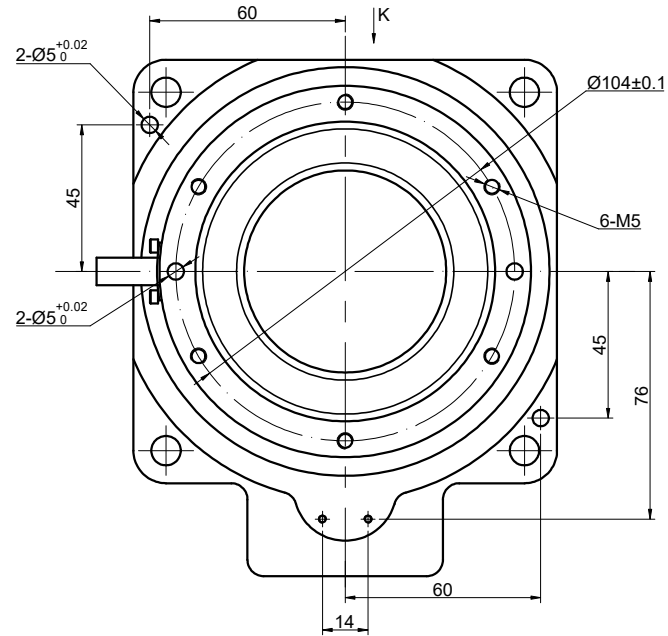
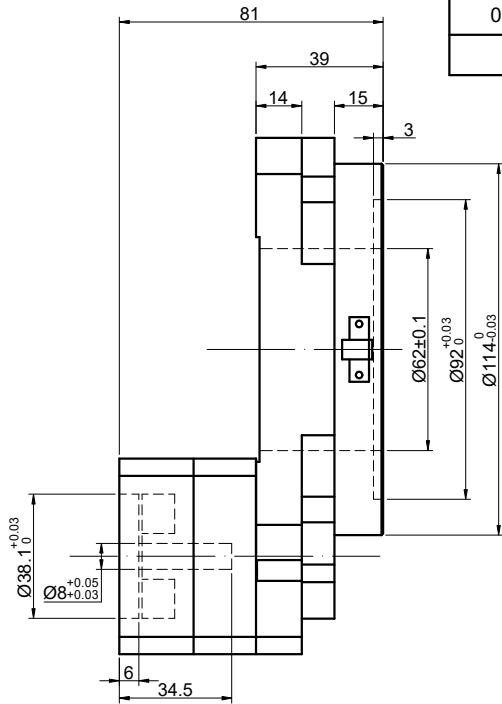
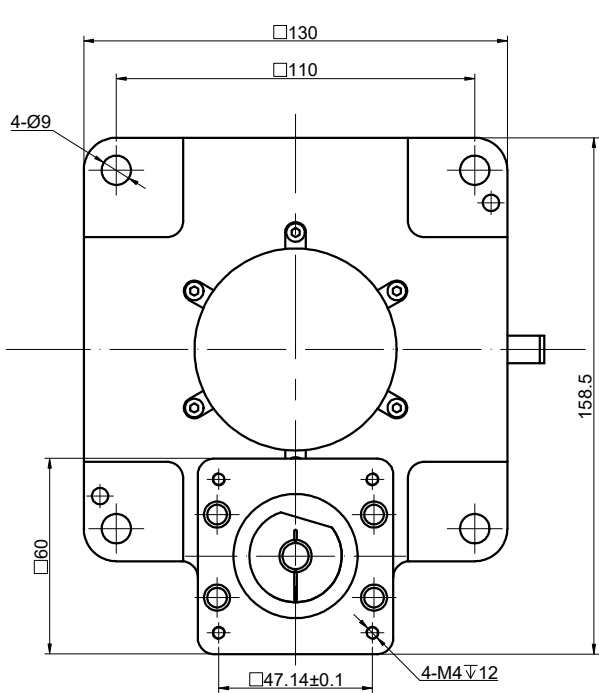
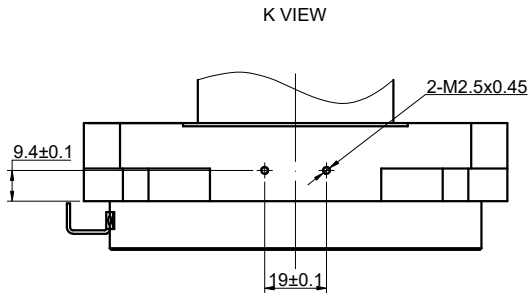


REV.	REVISION RECORD	BY	DATE
0	ORIGIN	ZPJ	11.21.2024



SPECIFICATION	CONNECTION	VALUE
GEAR RATIO		18
EFFICIENCY		95%
POSITION ACCURACY		3arcmin
REPEAT POSITION ACCURACY		±15arcsec
PERMISSIBLE TORQUE(Nm)[lb-in]		20.00[177.01]
ALLOWABLE MOMENT OF INERTIA(Nm)		32.00
MOMENT OF INERTIA(g·cm²)		81556
MAX. AXIAL LOAD(N)		2000
RECOMMENDED AXIAL LOAD(N)		250
PERMISSIBLE OUTPUT SPEED(RPM)		200
PLATFORM PARALLELISM(MM)		<=0.010
PLATFORM SURFACE JUMPING(MM)		<=0.010
NOISE(dB)		<=65
WATERPROOF RATING		IP40
LIFE(h)		20000
LUBRICATION METHOD		LUBRICATING GREASE

DIMENSIONS ARE IN MILLIMETERS.
TOLERANCES AS BELOW:
DECIMALS ANGLES
X ±0.5 ±2°
X.X ±0.25
X.XX ±0.13



STEPPERONLINE®									
HOLLOW ROTATING PLATFORM									
HRP130KH-G18-D8									
REV.	0	SCALE	2:3	DWG NO.	A3901				

THIRD ANGLE PROJECTION		SIGNATURE		DATE
		DRN	ZPJ	11.21.2024
		APVD	LDJ	11.21.2024