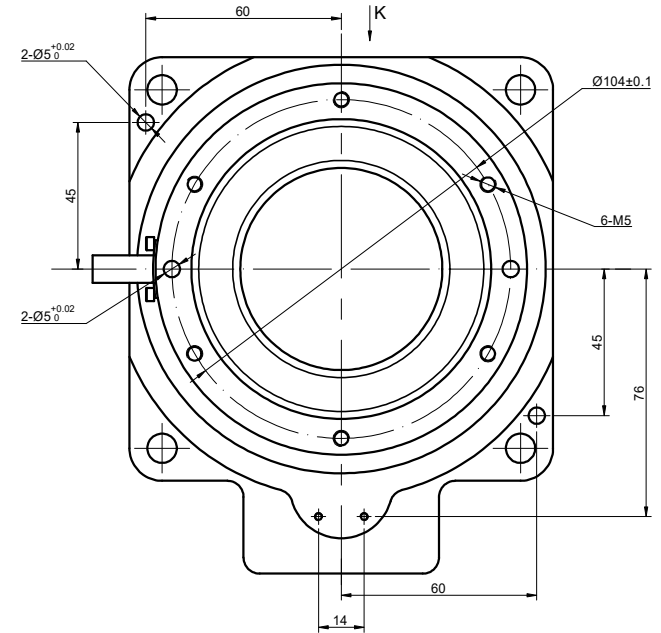
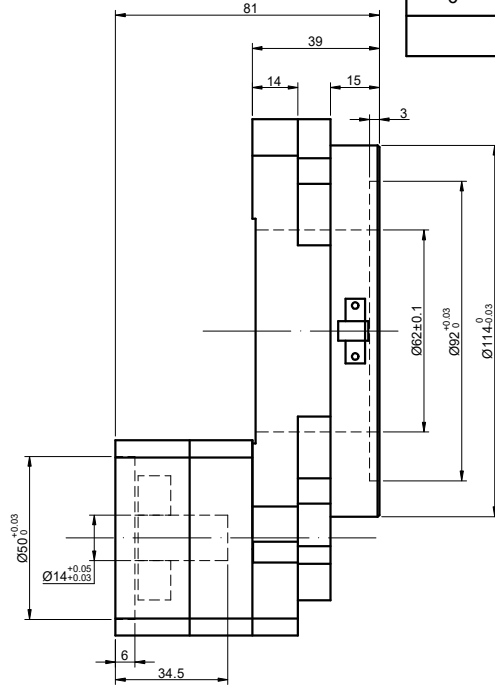
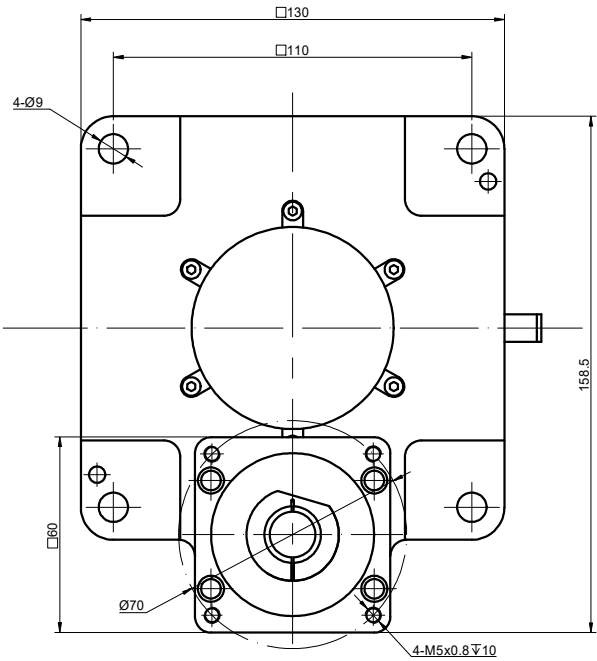
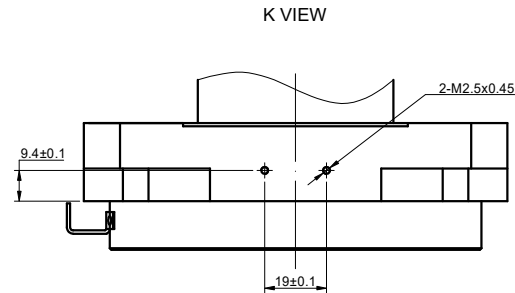


REV.	REVISION RECORD	BY	DATE
0	ORIGIN	ZPJ	11.21.2024



SPECIFICATION	CONNECTION	VALUE
GEAR RATIO		18
EFFICIENCY		95%
POSITION ACCURACY		3arcmin
REPEAT POSITION ACCURACY		±15arcsec
PERMISSIBLE TORQUE(Nm)[lb-in]		20.00[177.01]
ALLOWABLE MOMENT OF INERTIA(Nm)		32.00
MOMENT OF INERTIA(g·cm²)		81556
MAX. AXIAL LOAD(N)		2000
RECOMMENDED AXIAL LOAD(N)		250
PERMISSIBLE OUTPUT SPEED(RPM)		200
PLATFORM PARALLELISM(MM)		<=0.010
PLATFORM SURFACE JUMPING(MM)		<=0.010
NOISE(dB)		<=65
WATERPROOF RATING		IP40
LIFE(h)		20000
LUBRICATION METHOD		LUBRICATING GREASE



DIMENSIONS ARE IN MILLIMETERS.
TOLERANCES AS BELOW:
DECIMALS ANGLES
X ±0.5 ±2°
X.X ±0.25
X.XX ±0.13

THIRD ANGLE
PROJECTION



SIGNATURE

DATE

DRN

ZPJ

11.21.2024

APVD

LDJ

11.21.2024

STEPPERONLINE®

HOLLOW ROTATING PLATFORM

HRP130KK-G18-D14

REV. 0 SCALE 2:3 DWG NO. A3903