

5263V 'ON GMD 006-223-SR081-SQH1001S31E11L 'ON TEDOM

CUSTOMER'S MODEL: NO MODEL

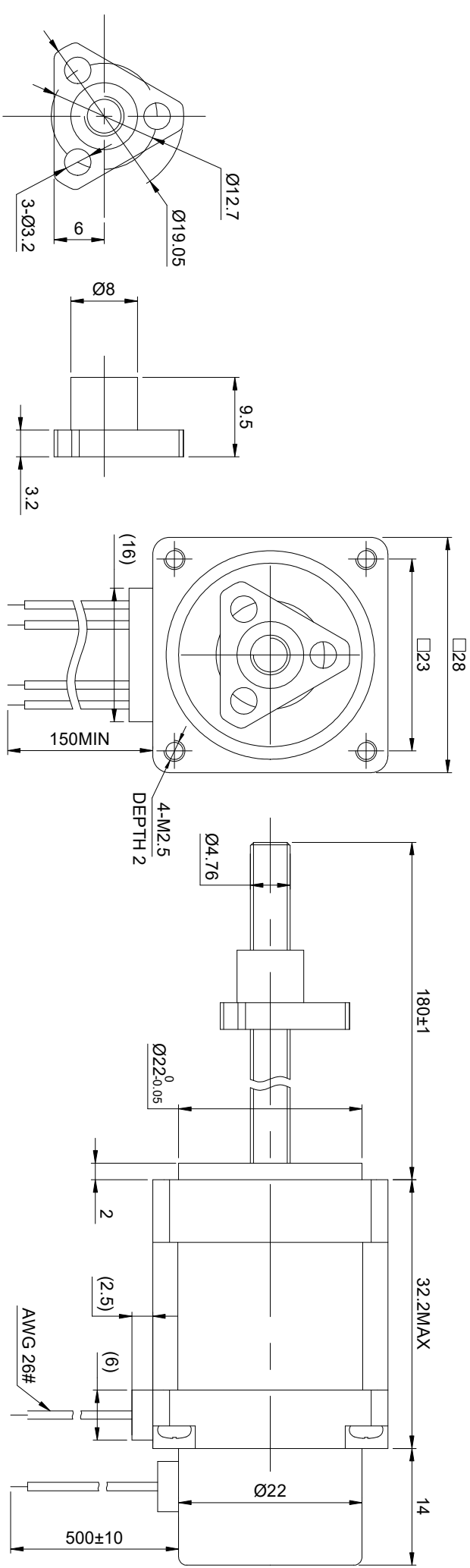
END COVER COLOR: BLACK

REV. REVISION RECORD

0 ORIGIN

BY DATE

LDJ 11.25.2024



SPECIFICATION	CONNECTION	BIPOLAR
AMPS/PHASE		1.00
RESISTANCE/PHASE(Ohms)@25°C		2.10±10%
INDUCTANCE/PHASE(mH)@1KHz		1.50±20%
HOLDING TORQUE(Nm)[lb-in]		0.05[0.44]
STEP ANGLE(°)		1.80
STEP ACCURACY(NON-ACCUM)		±5.00%
LEAD(mm)		5.08
LINEAR TRAVEL/STEP(mm)		0.0254
AMBIENT TEMPERATURE		-20°C~50°C[4°F~122°F]
INSULATION CLASS		B 130°C[266°F]
TEMPERATURE RISE		MAX. 80°C
AMBIENT HUMIDITY		MAX. 85%

HKT2204-702C1-300B-5E

Voltage	Output	Resolution
5V	A B	300 PPR

Flat Cable	1	2	3	4	5
Voltage Output	0V	NC	Ch B	+5V	Ch A

FULL STEP 2 PHASE-EX. WHEN FACING MOUNTING END (X)					
STEP	A+	B+	A-	B-	
1	+	+	-	-	
2	-	+	+	-	
3	-	-	+	+	
4	+	-	-	+	
CW					↑
CCW					↑

DIMENSIONS ARE IN MILLIMETERS. TOLERANCES AS BELOW:		
X	±0.5	ANGLES ±2°
X X	±0.25	
X.XX	±0.13	
THIRD ANGLE PROJECTION		⌀

THIS DOCUMENT SHALL NOT BE REPRODUCED NOR SHALL THE INFORMATION CONTAINED HEREIN BE USED BY OR DISCLOSED TO OTHERS UNLESS EXPRESSLY AUTHORIZED IN BY WRITING STEP&ERONLINE.

SIGNATURE		DATE
DRN	LDJ	11.25.2024
APVD	ZPJ	11.25.2024

REV.	0	SCALE	1:1	DWG NO.	A3925
11E13S1004HD5-180RS-E22-300					

STEPPERONLINE®

LINEAR ACTUATOR

MOTOR CONNECTION			WINDING
PIN NO	BIPOLAR	LEADS	
1	A+	RED	A+
2	A-	RED/WHI	A-
3	B+	GRN	B+
4	B-	GRN/WHI	B-