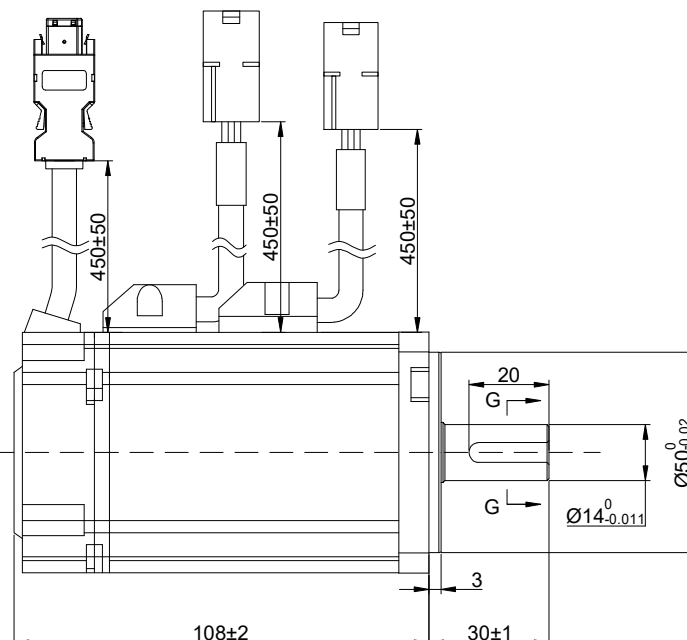
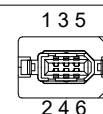
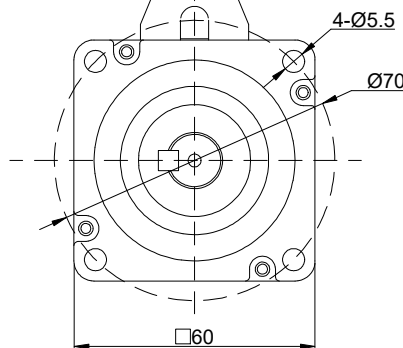
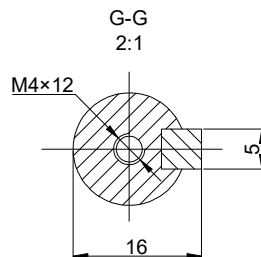
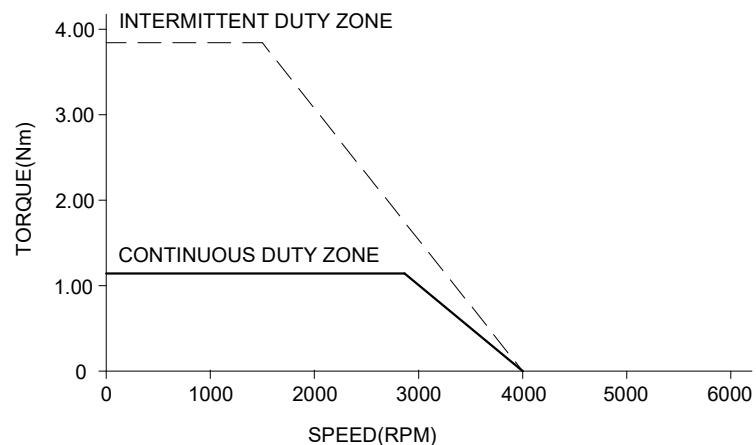


SPEED - TORQUE CURVE



SPECIFICATION	VALUE
RATED POWER(W)	200
RATED VOLTAGE(VDC)	48
RATED TORQUE(Nm)	0.637
PEAK TORQUE(Nm)	1.91
RATED SPEED(RPM)	3000
RATED CURRENT(Amp)	5.20
BACK EMF CONST(V/KRPM)	±10%
TORQUE CONST(Nm/Amp)	0.123
LINE RESISTANCE(Ω)	0.86±10%
LINE INDUCTANCE(mH)	1.46±20%
INERTIA(Kg <sup>2</sup> •m)	0.29×10 <sup>-4</sup>
INSULATION CLASS	F
IP RATING	IP65
POLES	10
ELECTRICAL TIME CONSTANT(ms)	1.70
ENCODER RESOLUTION	17 bit
WEIGHT(KG)	1.33

## COMMENT:

- 1.DYNAMIC AXIAL LOAD: 74N MAX;  
2.DYNAMIC RADIAL LOAD : 245N MAX

SEQUENCE OF MOTOR CABLES				
PIN-NO.	1	2	3	4
DESCRIPTION	U	V	W	PE
COLOUR	RED	YEL	BLU	YEL/GRN

ENCODER CABLE SEQUENCE						
PIN-NO.	1	2	3	4	5	6
DESCRIPTION	+5V	GND	-	-	485+	485-
COLOUR	RED	BLK	-	-	BLU	YEL

BRAKE SPECIFICATIONS	
HOLDING TORQUE(Nm)	1.52
VOLTAGE(V)	24
POWER(W)	7.3
CURRENT(A)	0.32

**STEPPERONLINE®**

	APVD	MYX	12.9.2024
	CHKD		
2:1	DRN	LDJ	11.4.2024
SCALE	SIGNATURE		DATE

**DC SERVO MOTOR**

**DSY60-200L2B2M17S**