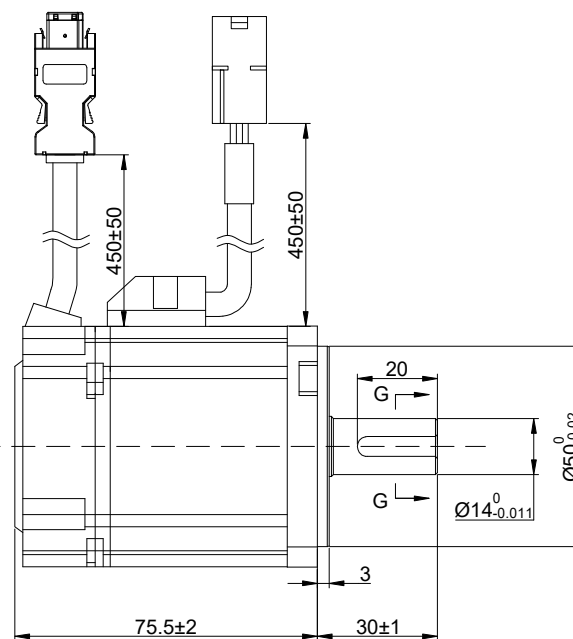
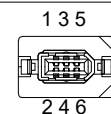
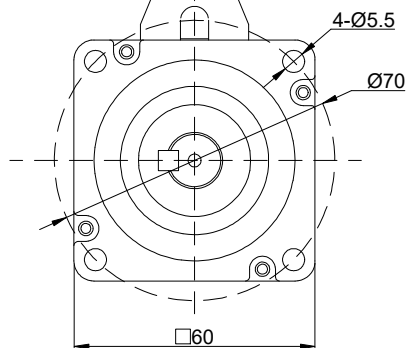
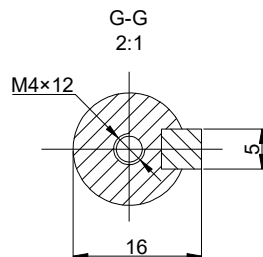
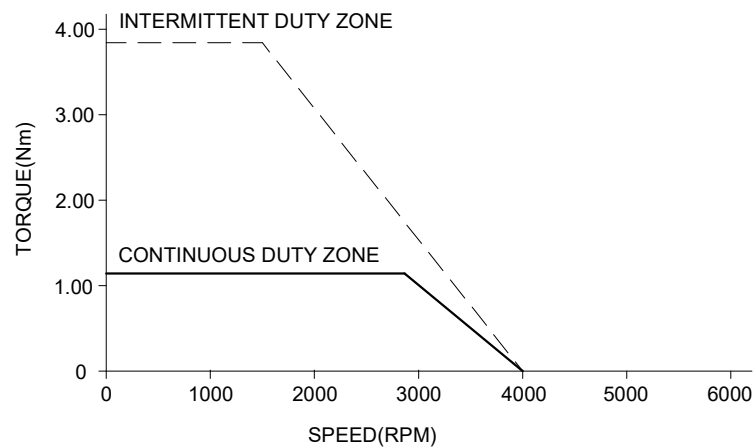


SPEED - TORQUE CURVE



SPECIFICATION	VALUE
RATED POWER(W)	400
RATED VOLTAGE(VDC)	48
RATED TORQUE(Nm)	1.27
PEAK TORQUE(Nm)	3.81
RATED SPEED(RPM)	3000
RATED CURRENT(Amp)	10.2
BACK EMF CONST(V/KRPM)	±10%
TORQUE CONST(Nm/Amp)	0.124
LINE RESISTANCE(Ω)	0.33±10%
LINE INDUCTANCE(mH)	0.65±20%
INERTIA(Kg ² •m)	0.49×10 ⁻⁴
INSULATION CLASS	F
IP RATING	IP65
POLES	10
ELECTRICAL TIME CONSTANT(ms)	1.97
ENCODER RESOLUTION	17 bit
WEIGHT(KG)	1.09

COMMENT:
1.DYNAMIC AXIAL LOAD: 74N MAX
2.DYNAMIC RADIAL LOAD : 245N MAX

SEQUENCE OF MOTOR CABLES						
PIN-NO.	1	2	3	4	--	--
DESCRIPTION	U	V	W	PE	--	--
COLOUR	RED	YEL	BLU	YEL/GRN	--	--

ENCODER CABLE SEQUENCE								
PIN-NO.	1	2	3	4	5	6	7	8
DESCRIPTION	+5V	GND	-	-	485+	485-	-	-
COLOUR	RED	BLK	-	-	BLU	YEL	-	-

STEPPERONLINE®

	APVD	MYX	12.9.2024
	CHKD		
2:1	DRN	LDJ	11.4.2024
SCALE	SIGNATURE		DATE

DC SERVO MOTOR

DSY60-400L2A2M17S